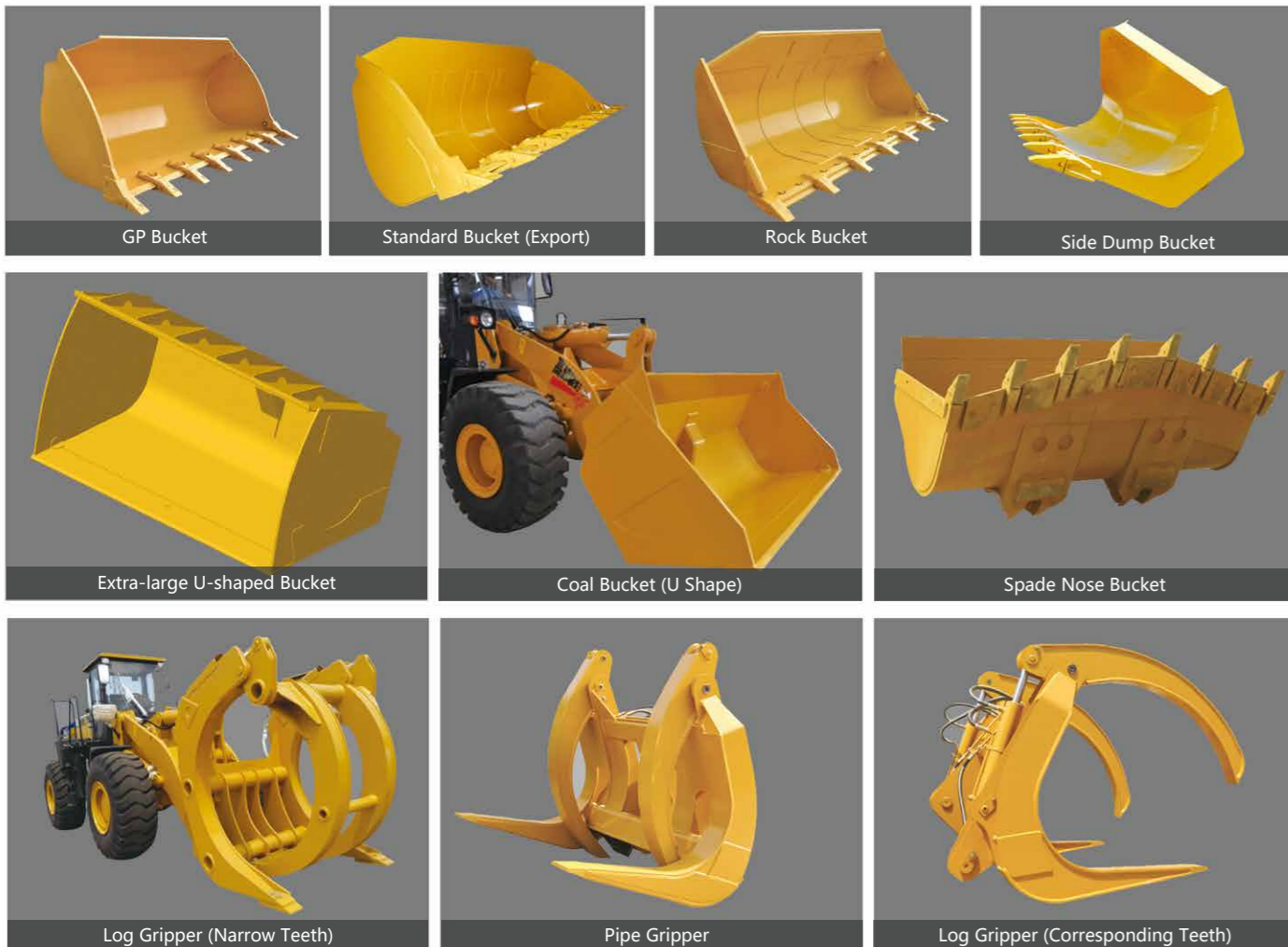


## Multiple Applications

- Landscaping, building, sewer/water tie-in, local utility construction
- Ready mix cement/concrete products, quarry/stone, clay, recycled aggregate, sand and gravel
- Highway, street, tunnel, airport, residential commercial



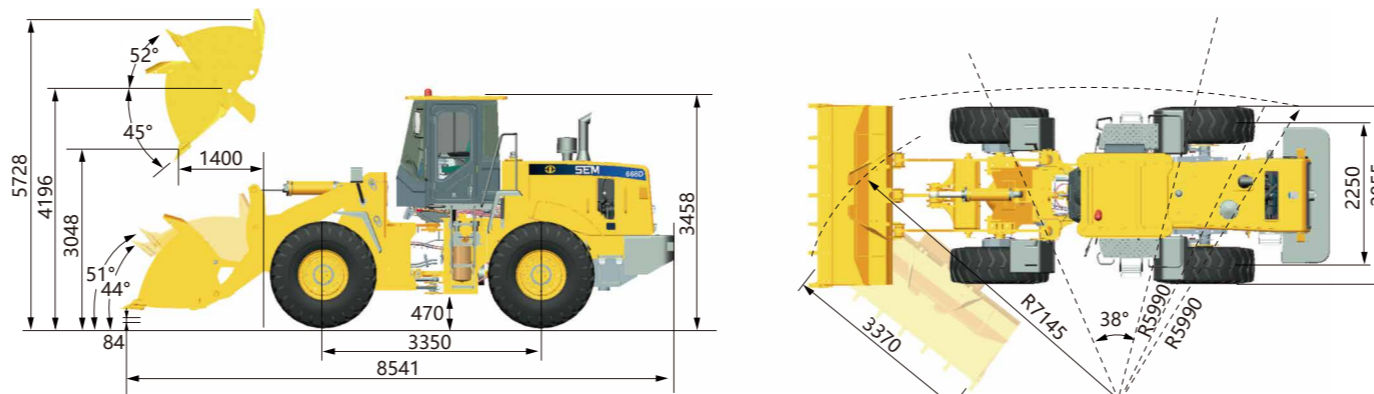
## Work Tool Options



## Main Specifications

Items	SEM668D	Items	SEM668D
Main Specifications		Engine	
Rated Load	kg 6,000	Model	Weichai WD10G240E201
Operating Weight with Standard Bucket	kg 20,117	Rated Power	kW 178
Bucket Capacity	m³ 2.9-5.5	Rated Speed	r/min 2,200
Wheel Base	mm 3,350	Displacement	L 9.7
Overall Dimension	mm 8,541*3,092*3,458	Implement Hydraulic	
Max. Drawbar Force	KN 188	Implement System Type	Open Center
Breakout Force	KN 197	Boom Raise Time	s 5.33
Dump Clearance	mm 3,051	Hydraulic Cycle Time	s 9.85
B-Pin Height	mm 4,196	System Pressure Setting	Mpa 18
Transmission		Brake System	
Transmission Type	Countershaft, Powershift, EH Control	Service Brake	Dry&Caliper, Air to Oil Control
Transmission Gears	F4/R3	Parking Brake	Drum/Shoe
Torque Converter Type	Single Stage, 3 Elements	Steering System	
Maker & Type	SEM160	System Type	Shared Flow
Forward I/Reverse I	6.3/6.3	Steering Pump Type	Gear Pump
Forward II/Reverse II	11/11	System Pressure Setting	Mpa 16
Forward III/Reverse III	19.6/19.6	Steering Angle (L/R)	38±1
Forward IV/Reverse IV	32/NA	Tires	
Axle		Size	23.5-25
Main Drive Type	Spiral Bevel Gear, Single Stage	Type	Bias
Final Drive Reduction Type	Planetary Type, Single Stage	Layer	20
Rear - Oscillating +/-	±11	Textured Type	L-3

## Machine Dimensions



► Note: the above dimensions are based on the standard configuration.

Caterpillar (Qingzhou) Ltd. Address: No.12999 Nanhuan Road,Caterpillar Industrial Park, Qingzhou City,Shandong Province, Zip Code: 262500 P.R.China

© Materials and specifications are subject to change without notice. Featured machines in photos may include optional equipment. See your SEM dealer for available options.  
© 2019 Caterpillar (Qingzhou) Ltd. All Rights Reserved. SEM Machinery, SEM, their respective logos, trade dress as well as corporate and product identity used herein, are trademarks of Caterpillar (Qingzhou) Ltd. and may not be used without permission.

Version: April 2019

# SEM668D Wheel Loader



## SEM668D

### Product Advantages

- **Reliability:** Sturdy frame design for heavy duty, Caterpillar design transmission and made in house axle make usage life longer
- **Productivity:** EH control transmission with KD and auto speed function, optimized TC and engine match 11% rimpull improved
- **Fuel consumption:** Optimized transmission flow and E-fan deliver lower fuel consumption
- **Comfortable:** Good visibility cab low noise design with first class premium 6 directions adjustable seat make comfortable operation

Website <http://www.semmachinery.com>



## Engine

- E-fan make fuel consumption better, 3 speeds auto-selection depend on coolant temperature
- 3 stages air cleaner with 93% efficiency pre-cleaner reduce earlier wearing, high efficiency fuel filter make engine work in good condition
- Caterpillar design damping mount reduce vibration failure. Four air valves delivers robust power



## Hydraulic System

- Two pumps flow sharing system deliver high productivity and fuel efficiency
- World class pump and Cat technology lines routing deliver better reliability
- Full hydraulic load sensing steering deliver easy operation and more comfortable



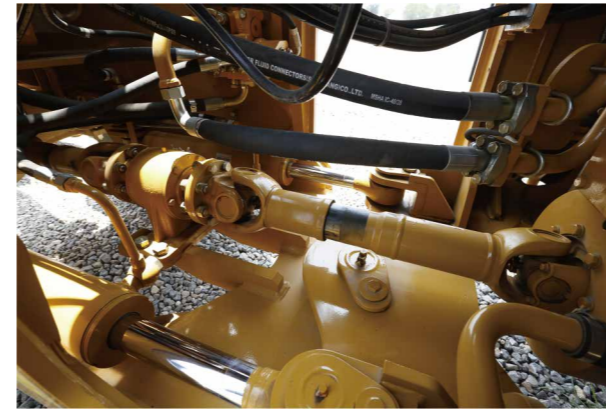
## Operator Station

- Mould formed cab with all trims and more vents with HVAC make operation comfortable better
- First class premium seat with suspension adjustable, arm rest and safety belt. Up-down, forward and reverse adjustable
- Caterpillar design damping mount reduce vibration failure
- Slide window, fresh air inlet system make environment better



## Drivetrain

- Improve transmission oil system efficiency, make machine fuel consumption reduce
- Optimized marc mount reduce vibration deliver longer durability
- Made in house axle well fitted heavy duty application
- Caterpillar design drive shaft and block bearing make machine more reliable



## Cooling System

- High performance aluminum cooling package suitable for most severity application
- Oil cooler and radiator parallel design can balance heat load inside and suitable for diversity applications
- Damping design reduces vibration failure



## Solid Structure

- Validated by Cat method FEA (Finite Element Analysis) and OMSA (On Machine Stress Analysis)
- Middle articulation frame less work space needed and reduce tire wearing
- Large thread design in articulation section improves load capacity



## Serviceability

- Quick pressure test ports on hydraulic (SOS) and brake air lines make diagnose easier
- Large wing hood door make service easier, approach to air cleaner, fuel filter and oil filter
- Large thread design in articulation section make operator easier to approach
- Air tank with pressured air tap provide more convenient for service and maintenance



## Safety

- High decibel beacon and backup alarm make person around easy to attention
- 3 stage alarm system on panel make operator easy to notice
- 3 touch points enter and exit cab make operator more safely

