

SEM  
WHEEL LOADER

# SEM 665F



# Standard Equipment

## ENGINE

- Weichai WD10G240 Engine EPA Tier 2/EU Stage II engine output 178 kW (239 hp), 6 cylinders, 4 stroke
- Mechanical direct fuel injection system
- Pre-filter with water separator
- Fuel filter
- E-fan

## TRANSMISSION

- Electrical hydraulic control countershaft transmission

## AXLE

- SEM dry axle without limited slip differentials
- Caliper discs service brake system
- Parking brake service

## HYDRAULIC SYSTEM

- Two pump flow sharing system
- Single joystick control
- Lift arm kick-out, automatic
- Bucket positioner, automatic
- Plugs for pressure check and sample oil
- Emergency lift arm lower via pilot accumulator

## STEERING SYSTEM

- Load sensing system with coaxial flow amplification and steering priority
- Piston pump

## TIRE & RIM

- 23.5-25, L3/E3, bias tire
- Normal fender with rubber plate

## CHASSIS FRAME

- Spacious central articulation arrangement with conic bearing
- Articulation locking bar
- Tow hitch

## LINKAGE & ATTACHMENTS

- Z-bar linkage

## ELECTRIC SYSTEM

- Two front lights with high/low beam
- Two front headlights on top of cab
- Two rear headlight sides of hood
- Turn signals with flasher
- Batteries, free of maintenance
- 24 V power outlet
- Electric horn
- Front windshield wiper
- Back-up alarm
- Reversing warning light, automatic
- Rotating beacon
- Radio/player with bluetooth port

## DASHBOARD

- Engine coolant temperature
- Transmission oil temperature
- Fuel level
- Hour meter
- Voltage

## ALARM SYSTEM

- Intake air filter alert
- Battery charging
- Brake oil pressure
- Parking brake applied
- Power cut-off
- Turning lights
- Transmission oil pressure alarm

## CAB

- Seat - mechanical suspension with seat belt
- Adjustable steering column
- Cab marco mounts
- Cab fresh air filter
- One interior & dual exterior rear view mirrors
- Cab rear wiper and washer
- HVAC

## OTHERS

- Manual central lubrication
- Product link (available for certified countries, check details with your local SEM dealers)
- License-plate bracket and light

# Optional Equipment

## ENGINE

- Oil bath air filter

## COOLING

- High ambient cooking package

## AXLE

- S036 heavy duty axle

## TIRE & RIM

- Radial tire
- Tubeless tire 26.5-25
- Desert pattern tire

## CAB

- ROPS cab
- Rear-view camera
- Cab top protection guard

## LINKAGE & ATTACHMENTS

- Additional counterweight
- High / Super-high linkage
- Rock bucket
- Coal bucket
- Aggregate bucket
- Log grapple with corresponding and crossed teeth
- Quick coupler
- Forke

## CONTROL

- 2-lever pilot control
- 3-lever pilot control for 3 rd valve
- Joystick + 1 lever pilot control for 3 rd valve

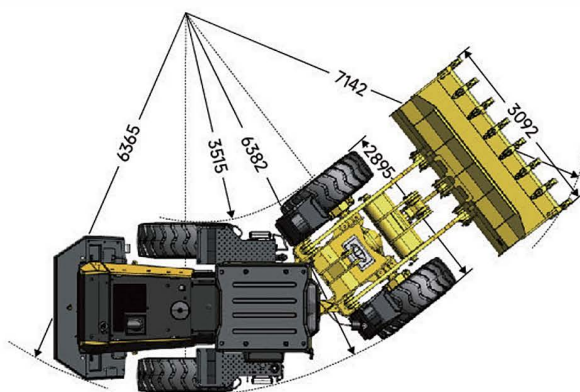
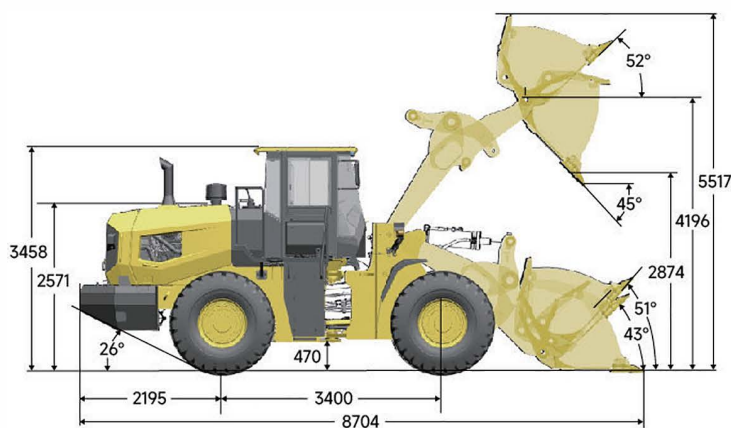
## OTHERS

- Brake air drier
- Transmission protective guard

## Main Specifications

Items		665F	Items		665F
<b>Main Specifications</b>			<b>Engine</b>		
Rated Load	kg	6,500 (for Std. Linkage)	Model		WD10G240
Operating Weight with Standard Bucket	kg	20,500	Rated Power	kW	178
Bucket Capacity	m <sup>3</sup>	2.9-5.5	Rated Speed	r/min	2,000
Wheelbase	mm	3,400	Displacement	L	9.7
Overall Dimension	mm	8,704*3,092*3,458	<b>Implement Hydraulic</b>		
Max. Drawbar Force	kN	220	Implement System Type		Open center flow sharing
Breakout Force	kN	188	Boom Raise Time	s	5.7
Dump Clearance	mm	3,050	Hydraulic Cycle Time	s	9.8
B-Pin Height	mm	4,196 (for Std. Linkage)	System Pressure Setting	MPa	20
<b>Transmission</b>			<b>Brake System</b>		
Transmission Type		EH countershaft, power shift	Service Brake		Dry & caliper, air to oil control
Transmission Gears		F2/R1	Parking Brake		Drum/Shoe
Maker & Type		SEM TR220	<b>Steering System</b>		
Forward I	km/h	11.6	System Type		Load sensing
Forward II	km/h	38.5	Steering Pump Type		Piston pump
Reverse I	km/h	15.5	System Pressure Setting	MPa	18
<b>Axle</b>			Steering Angle (L/R)	°	38±1
Main Drive Type		Spiral bevel gear, single stage	<b>Tires</b>		
Final Drive Reduction Type		Planetary type, single stage	Size		23.5-25
Rear - Oscillating +/-	°	±11	Type		Bias
			Layer		20
			Textured Type		L-3

## Dimensions



## WORK TOOLS

Capacity (m³)	Description	Lift Arm	Image	Dump Clearance (mm)	B Pin Height (mm)	Dump Reach (mm)	Work Tool W*L*H (mm)	Work Tool Weight (kg)	Note
2.8	BKTA SD ST 3080 mm	STD		4,080/ 2,839	4,196	190/ 1,516	3,080*2,072*1,727	3,420	Side dump bucket, with tips and segments
2.9	BKTA RSP ST 3100 mm	STD		2,827	4,196	1,456	3,100*1,746*1,379	2,369	Spade nose rock bucket with tips and segments and sidebar protectors
3.3	BKTA RST ST 3078 mm	STD		3,107	4,196	1,302	3,078*1,535*1,378	2,171	Rock bucket, with tips, segments and protector side bar.
3.5	BKTA FF ST 3094 mm	STD/ HL/SHL		3,051/ 3,426/3,686	4,196/ 4,530/4,774	1,397/ 1,407/1,231	3,094*1,691*1,442	1,917	Performance series bucket, with tooth
3.5	BKT SD ST 3206 mm	STD		4,030/ 2,749	4,196	230/ 1,763	3,206*2,212*1,735	3,612	Side dump bucket, with tips and segments
3.6	BKTA FF ST 3020 mm	STD/ HL/SHL		2,996/ 3,390/3,611	4,196/ 4,530/4,774	1,290/ 1,293/1,242	3,020*1,515*1,415	1,890	Performance series bucket, with cutting edge
4	BKTA GP ST 3394 mm	STD/ HL/SHL		3,096/ 3,430/3,674	4,196/ 4,530/4,774	1,382/ 1,323/1,281	3,394*1,714*1,543	2,099	Premium performance series bucket, with tooth
4.1	BKTA GP ST 3370 mm	STD/ HL/SHL		3,048/ 3,382/3,626	4,196/ 4,530/4,774	1,399/ 1,341/1,298	3,370*1,540*1,521	2,057	Premium performance series bucket, with cutting edge
4.5	BKTA FF ST 3370 mm	HL/SHL		3,353/3,598	4,530/4,774	1,357/1,293	3,370*1,560*1,524	2,063	With cutting edge
5.5	BKTA FF ST 3520 mm	STD/SHL		2,870/3,405	4,196/4,774	1,545/1,469	3,520*1,795*1,452	2,611	Coal bucket, with Cutting edge
7.5	BKT FF LM 3520 mm	SHL		3,737	5,173	1,710	3,520*1,820*1,828	2,600	Light material bucket

