

Machine Applications

- Landscaping, building, sewer/water tie-in, local utility construction
- Ready mix cement/concrete products, quarry/stone, clay, recycled aggregate, sand and gravel
- Highway, street, tunnel, airport, residential commercial



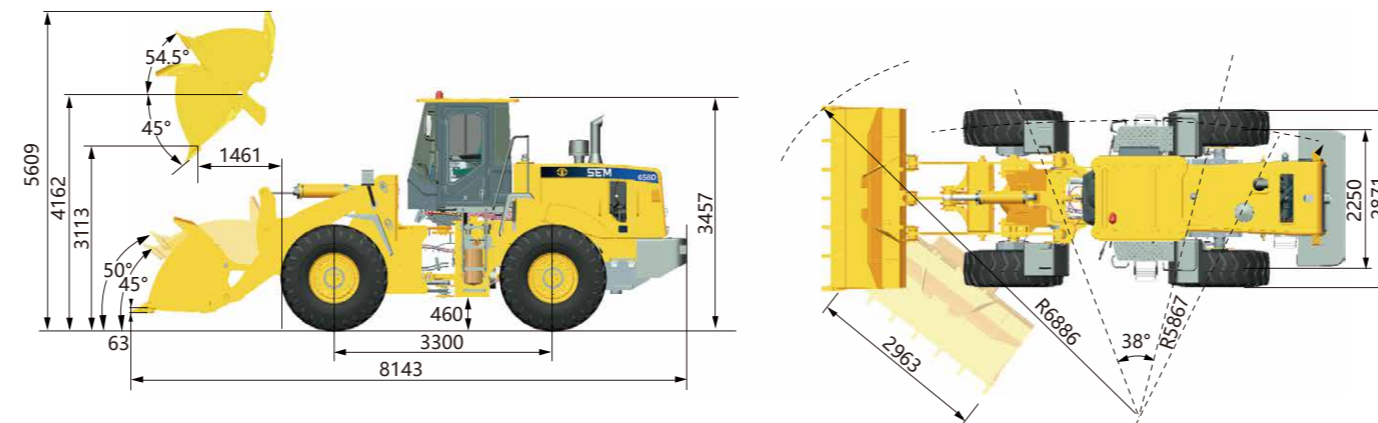
Work Tool Options



Main Specifications

Items	SEM658D		Items	SEM658D	
Main Specifications			Engine		
Rated Load	kg	5,000	Model	Cummins 6LTAA9.3	
Operating Weight with Standard Bucket	kg	17,084	Rated Power	kW	162
Bucket Capacity	m ³	2.6-4	Rated Speed	r/min	2,200
Wheel Base	mm	3,300	Displacement	L	9.3
Overall Dimension	mm	8,143*2,963*3,457	Implement Hydraulic		
Max. Drawbar Force	KN	169	Implement System Type	Open Center	
Breakout Force	KN	178	Boom Raise Time	s	5.37
Dump Clearance	mm	3,113	Hydraulic Cycle Time	s	9.3
B-Pin Height	mm	4,162	System Pressure Setting	Mpa	18
Transmission			Brake System		
Transmission Type	Countershaft, Powershift, EH Control		Service Brake	Dry&Caliper, Air to Oil Control	
Transmission Gears	F4/R3		Parking Brake	Drum/Shoe	
Torque Converter Type	Single Stage, 3 Elements		Steering System		
Maker & Type	SEM160		System Type	Shared Flow	
Forward I/Reverse I	7.27.2		Steering Pump Type	Piston Pump	
Forward II/Reverse II	13/13		System Pressure Setting	Mpa	16
Forward III/Reverse III	23/23		Steering Angle (L/R)	38±1	
Forward IV/Reverse IV	37/NA		Tires		
Axle			Size	23.5-25	
Main Drive Type	Spiral Bevel Gear, Single Stage		Type	Bias	
Final Drive Reduction Type	Planetary Type, Single Stage		Layer	16	
Rear - Oscillating +/-	±11		Textured Type	L-3	

Machine Dimensions



► Note: the above dimensions are based on the standard configuration.

Caterpillar (Qingzhou) Ltd. Address: No.12999 Nanhuan Road, Caterpillar Industrial Park, Qingzhou City, Shandong Province, Zip Code: 262500 P.R.China

© Materials and specifications are subject to change without notice. Featured machines in photos may include optional equipment. See your SEM dealer for available options.
 © 2019 Caterpillar (Qingzhou) Ltd. All Rights Reserved. SEM Machinery, SEM, their respective logos, trade dress as well as corporate and product identity used herein, are trademarks of Caterpillar (Qingzhou) Ltd. and may not be used without permission.

Version: April 2019- Cummins

SEM658D Wheel Loader



† Installed with Cummins Engine
 ※ Featured machines in photos may include optional equipment

SEM658D

Product Advantage

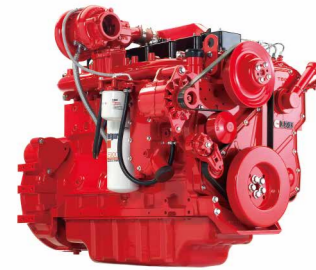
- **Reliability:** Sturdy frame design for heavy duty, Caterpillar design EH transmission and made in house axle make usage life longer
- **Productivity:** EH control transmission with KD and auto speed function, optimized TC and engine match 8% rimpull improved
- **Fuel Consumption:** Optimized transmission flow save fuel, E-fan and single load sensing hydraulic system make lower fuel consumption
- **Comfortable:** Good visibility, low noise design with first class premium 5 direction adjustable seat make operation comfortable

Website <http://www.semmachinery.com>



Engine

- Specially configured curve to optimize torque and power for higher productivity and better fuel efficiency
- Maximized fuel efficiency over the range of wheel loader operating duty cycles make fuel consumption better
- Large torque in Low engine speed, good reaction performance in low speed & good acceleration
- Radial seal air filter, easy for service



Hydraulic System

- Single load sensing system, high productivity and high fuel efficiency
- Piston pump, lower heat load contribution and provide more rim pull when hydraulic partial working
- Less hydraulic oil capacity required because provide flow depends on demand



Operator Station

- Mould formed cab with all trims design and more vents with HVAC make operator feel better
- First class premium seat with suspension adjustable, arm rest and safety belt. Up-down, forward and reverse adjustable
- Caterpillar method design damping mount reduce vibration failure
- Slide window, fresh air inlet system make environment better



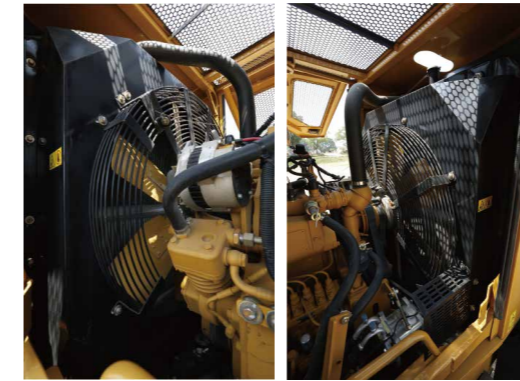
Drivetrain

- Improve transmission oil system efficiency, machine fuel consumption reduced
- Optimized marc mount reduce vibration
- Made in house axle well fitted heavy duty application
- Caterpillar design drive shaft and block bearing make machine more reliable



Cooling System

- High performance aluminum cooling package suitable for most severity applications
- Oil cooler and radiator parallel design can balance heat load inside and suitable diversity applications
- Damping design reduce vibration failure
- High ambient 50°C cooling package make machine reliability better



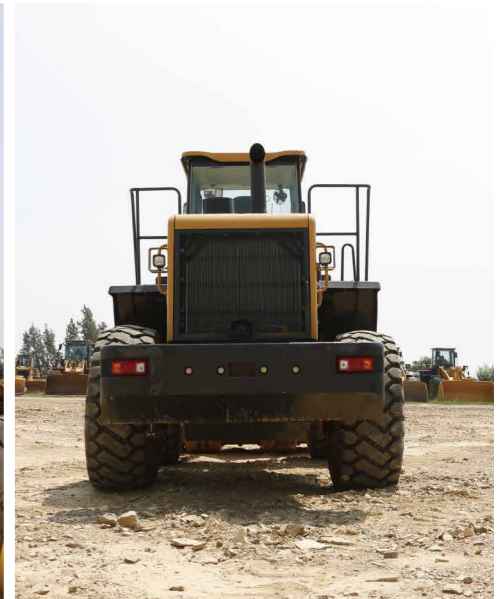
Solid Structure

- Validated by Cat method FEA (Finite Element Analysis) and OMSA (On Machine Stress Analysis)
- Middle articulation frame less work space needed, reduce tire wearing and fuel consumption
- Large thread design in articulation section improves load capacity



Serviceability

- Quick pressure test ports on hydraulic (SOS) and brake air lines make diagnose easier
- large wing hood door make service easier, approach to air cleaner, fuel filters and oil filters
- Large thread design in articulation section make operator easier to approach
- Air tank with pressured air tap provide more convenience for service and maintenance



Safety

- High decibel beacon and backup alarm make person around easy to attention
- 3 stages alarm system on panel make operator easy to notice
- 3 points touch entering and exit cab make operator more safely

