

SEM
WHEEL LOADER

SEM 676F



Standard Equipment

ENGINE

- Weichai WP10 Engine China Stage 3 (267 hp), 6 cylinders, 4 stroke
- Electrical control common rail fuel injection system
- Pre-filter with water separator
- Fuel filter
- E-fan

TRANSMISSION

- Electrical hydraulic control countershaft transmission
- One stage, 3 elements torque converter

AXLE

- SEM dry axle without limited slip differentials
- Caliper discs service brake system
- Parking brake service as secondary

HYDRAULIC SYSTEM

- Two pump flow sharing system
- Single joystick control
- Lift arm kick-out, automatic
- Bucket positioner, automatic
- Plugs for pressure check and sample oil
- Emergency lift arm lower via pilot accumulator

STEERING SYSTEM

- Load sensing system with coaxial flow amplification and steering priority
- Piston pump

TIRE & RIM

- 26.5-25, L3/E3, bias tire
- Normal fender with plastic plate

CHASSIS FRAME

- Spacious central articulation arrangement with conic bearing
- Articulation locking bar
- Tow hitch

LINKAGE & ATTACHMENTS

- Z-bar linkage

ELECTRIC SYSTEM

- Two front lights with high/low beam
- Two front headlights on top of cab
- Two rear headlight sides of hood
- Turn signals with flasher
- Batteries, free of maintenance
- 24 V power outlet
- Electric horn
- Front windshield wiper
- Back-up alarm
- Reversing warning light, automatic
- Rotating beacon

DASHBOARD

- Engine coolant temperature
- Transmission oil temperature
- Fuel level
- Hour meter
- Voltage

ALARM SYSTEM

- Intake air filter alert
- Battery charging
- Braking air pressure
- Parking brake applied power cut-off
- Turning lights
- Transmission oil pressure alarm

CAB

- Seat – mechanical suspension with seat belt
- Adjustable steering column
- Cab marco mounts
- Cab fresh air filter
- One interior & dual exterior rear view mirrors
- HVAC

OTHERS

- Manual central lubrication

Optional Equipment

ENGINE

- Oil bath air filter
- Preheater

TIRE & RIM

- Radial tire
- Tubeless tire

CAB

- ROPS/FOPS cab
- Rear-view camera display

LINKAGE & ATTACHMENTS

- Additional counterweight
- High/Super-high linkage
- Rock bucket
- Coal bucket
- Aggregate bucket
- Log gripper with corresponding teeth

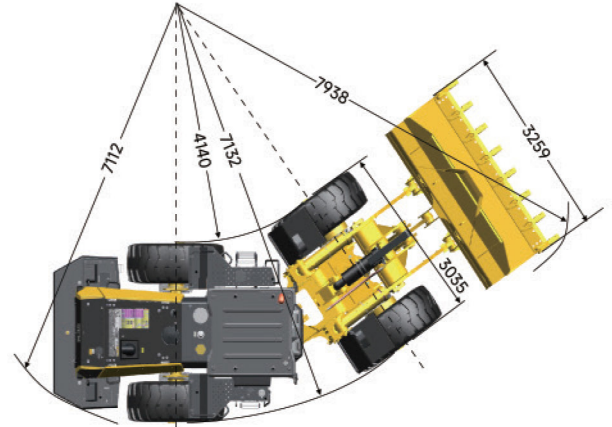
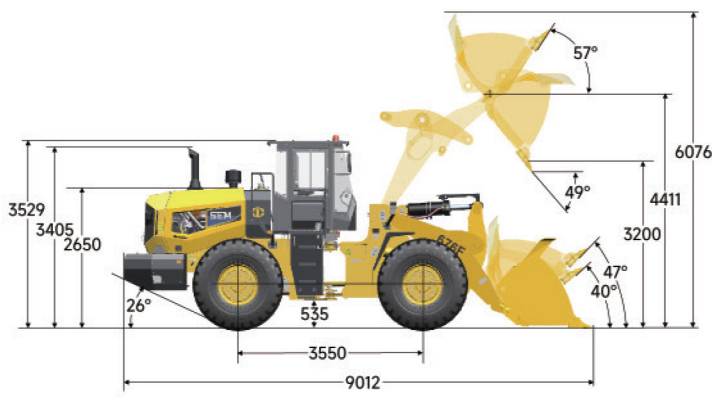
OTHERS

- Auto lubrication
- Transmission protection guard
- Product Link™

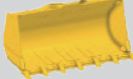
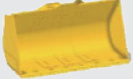
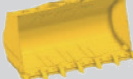
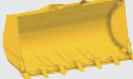
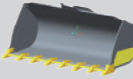


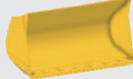
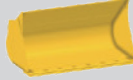
Main Specifications

| Items | | 676F | Items | | 676F |
|---------------------------------------|----------------|---------------------------------|----------------------------|-------|---------------------------------|
| Main Specifications | | | Engine | | |
| Rated Load | kg | 7,100 (for Std Linkage) | Model | | WP10G270 |
| Operating Weight with Standard Bucket | kg | 23,350 | Rated Power | kW | 199 |
| Bucket Capacity | m ³ | 4.2-6.5 | Rated Speed | r/min | 2,200 |
| Wheelbase | mm | 3,550 | Displacement | L | 9.7 |
| Overall Dimension | mm | 9,012* 3,259*3,529 | Implement Hydraulic | | |
| Max. Drawbar Force | kN | 215 | Implement System Type | | Open center filow sharing |
| Breakout Force | kN | 215 | Boom Raise Time | s | 5.7 |
| Dump Clearance | mm | 3,250 | Hydraulic Cycle Time | s | 9.8 |
| B-Pin Height | mm | 4,411 (for Std. Linkage) | System Pressure Setting | MPa | 24 |
| Transmission | | | Brake System | | |
| Transmission Type | | EH countershaft, power shift | Service Brake | | Dry&caliper, air to oil control |
| Transmission Gears | | F4/R3 | Parking Brake | | Drum/Shoe |
| Torque Converter Type | | Single stage, 3 elements | Steering System | | |
| Maker & Type | | SEM TR240 | System Type | | Load sensing |
| Forward I/Reverse I | km/h | 7.1/7.1 | Steering Pump Type | | Piston pump |
| Forward I/Reverse II | km/h | 12.7/12.7 | System Pressure Setting | MPa | 20 |
| Forward III/Reverse III | km/h | 23.8/23.8 | Steering Angle (L/R) | ° | 35±1 |
| Forward IV | km/h | 39 | Tires | | |
| Axle | | | Size | | 26.5-25 |
| Main Drive Type | | Spiral bevel gear, single stage | Type | | Bias |
| Final Drive Reduction Type | | Planetary type, single stage | Layer | | 24 |
| Rear-Oscillating +/- | ° | ±11 | Textured Type | | L-3 |

Dimensions



WORK TOOLS

| Capacity (m ³) | Description | Lift Arm | Image (mm) | Dump Clearance (mm) | B Pin Height (mm) | Dump Reach (mm) | Work Tool W ^L H (mm) | Work Tool Weight (mm) | Note |
|----------------------------|--------------------|------------|---|------------------------|------------------------|------------------------|---------------------------------|-----------------------|--|
| 3.5 | BKTA GP ST 3094 mm | STD/SHL |  | 3,265/3,602 | 4,411/4,900 | 1,158/1,325 | 3,094*1,613* 1,565 | 2,362 | Iron ore bucket, with tooth |
| 3.6 | BKTA GP ST 3022 mm | STD/SHL |  | 3,265/3,602 | 4,411/4,900 | 1,158/1,208 | 3,022*1,613* 1,565 | 2,362 | Iron ore bucket, with cutting edge |
| 3.6 | BKTA FF ST 3080 mm | STD |  | 3,265 | 4,411 | 1,158 | 3,080*1,801* 1,578 | 2,398 | Rock bucket, with tips and segments |
| 3.6 | BKTA FF ST 3080 mm | STD |  | 3,265 | 4,411 | 1,158 | 3,080*1,801* 1,578 | 2,422 | Rock bucket, with tips and segments and sidebar protectors |
| 4.2 | BKTA GP ST 3267 mm | STD/HL/SHL |  | 3250/ 3600/ 3740 | 4411/ 4778/ 4900 | 1310/ 1330/ 1350 | 3,267*1,669* 1,650 | 2,101 | Premium performance series bucket, with tooth |
| 4.4 | BKTA GP ST 3194 mm | STD/HL/SHL |  | 3190/ 3530/ 3684 | 4411/ 4778/ 4900 | 1310/ 1330/ 1350 | 3,194*1,669* 1,650 | 2,101 | Premium performance series bucket, with cutting edge |
| 5.0 | BKTA FF ST 3267 mm | STD/HL/SHL |  | 3160/ 3500/ 3650 | 4411/ 4778/ 4900 | 1260/ 1280/ 1300 | 3,267*1,940* 1,665 | 2,219 | With tooth |
| 5.1 | BKTA FF ST 3194 mm | STD/HL/SHL |  | 3160/ 3500/ 3650 | 4411/ 4778/ 4900 | 1260/ 1280/ 1300 | 3,194*1,940* 1,665 | 2,219 | With cutting edge |
| 6.5 | BKTA FF ST 3424 mm | STD/SHL |  | 2928/ 3265/ 3453 | 4411/ 4778/ 4900 | 1358/ 1378/ 1450 | 3,424*1,955* 1,780 | 2,598 | Coal bucket, with cutting edge |

Caterpillar (Qingzhou) Ltd. Address: No. 12999 Nanhuan Road, Qingzhou City, Shandong Province, Zip Code: 262500, P.R.China

© 2024 Caterpillar (Qingzhou) Ltd. All Rights Reserved 山工机械, SEM, SEM Logo, their respective logos, trade dress as well as corporate and product identity used herein, are trademarks of Caterpillar (Qingzhou) Ltd. and may not be used without permission.

Materials and specifications are subject to change without notice. Featured machines in photos may include optional equipment. Contact your SEM dealer for available options.

Version: January 2024



Scan the QR code to visit the SEM Official Website